



Where the mind is without fear  
and the head is held high;  
where knowledge is free;  
Where the world has not been broken up  
into fragments by narrow domestic walls;  
Where words come out from the depth of truth;  
Where tireless striving stretches its arms  
towards perfection;  
Where the clear stream of reason  
has not lost its way  
let my country awake.  
into the dreary desert sand of dead habit;  
Where the mind is led forward by thee  
into ever-widening thought and action-  
Into that heaven of freedom, my Father,

- Rabindranath Tagore



# THE BOUNDARIES END WHEN YOU ENTER THROUGH OUR GATE.

BE MORE THAN WHAT YOU THINK.



## SPARSH GLOBAL BUSINESS SCHOOL

Plot No.- 29/2, Knowledge Park-III, Greater Noida (Delhi-NCR), 201310 ☎ 7669933416

✉ info@sparshgbs.in 🌐 www.sparshgbs.in





## AN APPROACH THAT STEERS HOLISTIC DEVELOPMENT.

### VISION:

To nurture socially responsible global business leaders with an entrepreneurial and research-oriented mindset, fostering innovation and sustainable development.

### MISSION:

Our mission is to ensure academic excellence and corporate readiness by continually benchmarking as per global standards. We help students develop an entrepreneurial mindset and confidence to build and scale businesses, through action-oriented research and strong partnerships with all stakeholders, keeping in mind the real-world complexities, challenges and opportunities therein.

1. Ensure academic excellence and corporate readiness by constantly benchmarking against leading institutions and global perspectives.
2. Foster an entrepreneurial mindset and innovative thinking through immersive, experiential learning.
3. Develop socially responsible leaders for meaningful contributions to business.
4. Promote action-oriented research relevant to the evolving global landscape.
5. Build meaningful partnerships with industry, academia, government, and the social sector to address real-world challenges.





## PROPELLING VALUE CREATION AND SUSTENANCE THROUGH BUSINESS LEADERSHIP.

### MESSAGE FROM THE MANAGEMENT

The new world order has propelled global power-shifts and digitalisation in most aspects of human endeavours. Most theoretical constructs that defined trade, commerce, business, and management in the past century are now redundant, calling for a paradigm shift and reimagination of business structures and everything encompassing the spectrum of business and management functions.

This has necessitated the academia to re-think the way it is creating the next generation of business leaders. This has meant bridging the gap between academia and corporates so as to enable holistic academic pursuits in knowledge creation, knowledge dissemination, and knowledge application – more so with the purpose of sustenance in value creation.

Towards this, the Sparsh Group has taken the initiative of creating Sparsh Global Business School, a new-age business school equipped with state-of-the-art infrastructure and also a conducive ambience for value-creation and value-delivery for the global student community – and society at large. This has propelled the corporate community to reimagine businesses, manufacturing techniques, resource utilization, so as to create footprints in a world of sustainable business.

SGBS, born of a business house, is committed to creating a transformational journey in all learners – thereby creating conscious, compassionate, and efficient business leaders of tomorrow.

### DR. SHISHIR AGARWAL



### CEO'S MESSAGE DR. AMIT SAXENA

In ever changing dynamic business environment, disruption is the new normal. The advent of technology also brings tactical shift in the working environment as well and therefore, today we need business leaders who can thrive with their flexible outlook in a world that is full of uncertainty. Who else can understand this better than a business house itself therefore, to cater to the needs of the market, Sparsh Group launched Sparsh Global Business School to bring transformative education, prepare the next generation of business leaders, and cultivate a strong research culture relevant to the needs of academia, business, and society.

At Sparsh Global Business School, we have embraced this challenge and curated the programs very differently wherein, we have not only tried to bridge the gap between academics and industry but also how we impart knowledge and conduct research and bring entrepreneurial spirit in every individual. The core focus is being global, experimental, and transformation to groom the generation next to face and adapt to any kind of business challenges and become socially responsible business leaders.

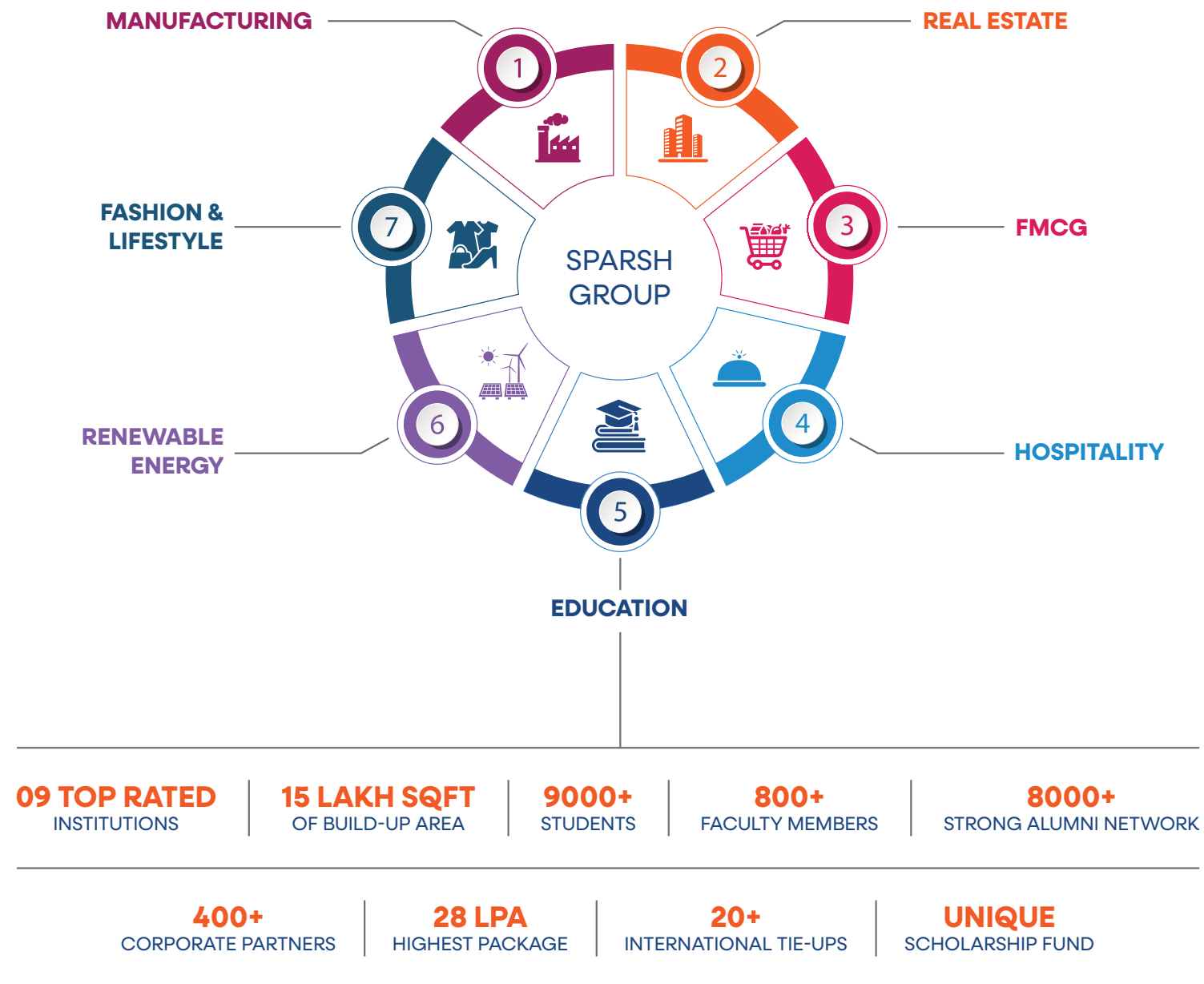
SGBS offers highly competitive AICTE-approved postgraduate program in management, executive education programs in data science and business intelligence, and entrepreneurship and innovation which are meant for those who are looking for the new-age education aligned with NEP 2020. At SGBS, we also have stitched a seamless relationship with the best global and Indian institutions to give a holistic environment of learning to our students.

We are proud – and fortunate – to have professors who excel in both research and teaching. They are committed to providing students with a top-rate business education. Some of them also have significant industry experience and serve on corporate boards.

SGBS has a very strong network of employers and top corporate professionals are also a part of a mentorship program to nurture every student to inspire them to drive business transformation with an entrepreneurial mindset from day 1.

Located in the Delhi NCR region, Sparsh Global Business School is an exciting place to learn and grow. We welcome you to join our community of achievers who are shaping the future of business.

# SPARSH LEGACY



## AICTE APPROVED PGDM 2-YEAR FULL-TIME RESIDENTIAL PROGRAM

CAPSTONE PROJECT	BLOOMBERG LAB & CERTIFICATIONS	GRANT THORNTON CERTIFICATION	PMI CERTIFICATION	NISM CERTIFICATION	
PERSONALITY GROWTH LABORATORY	EMPLOYABILITY ENRICHMENT CERTIFICATIONS	INTERNATIONAL BUSINESS SIMULATION	1000+ LEARNING HOURS	CHOICE BASED CREDIT SYSTEM (CBCS)	30+ COURSES
80+ ELECTIVES TO CHOOSE FROM	VALUE-ADD PROGRAMS	100 HOURS OF SOCIAL IMMERSION	4-6 WEEKS OF CORPORATE IMMERSION	GLOBAL IMMERSION PROGRAM	

### CAREER TRACKS: FUNCTIONAL & SECTORAL SPECIALIZATION



FINANCIAL  
MANAGEMENT  
& FINTECH



MARKETING  
MANAGEMENT



HUMAN RESOURCE  
MANAGEMENT &  
ORGANISATIONAL  
BEHAVIOUR



OPERATIONS &  
SUPPLY CHAIN  
MANAGEMENT



BUSINESS  
ANALYTICS



ENTREPRENEURSHIP  
AND INNOVATION





## WHAT SETS US APART?

### Corporate DNA

1. B-School from a Business House
2. Mentoring by Masters
3. Incubation Centre
4. Global Footprints

### Digital Immersive Pedagogy

5. Contextually-tailored Curriculum
6. Immersive and Engaging Pedagogy

### Holistic Business Leaders

7. I-EVOLVE Metric
8. Simulation Lab
9. Crafting Creative Careers

## PARTNERSHIPS & ASSOCIATIONS



## EMINENT RECRUITERS/ MENTORS FROM



Panel Discussions



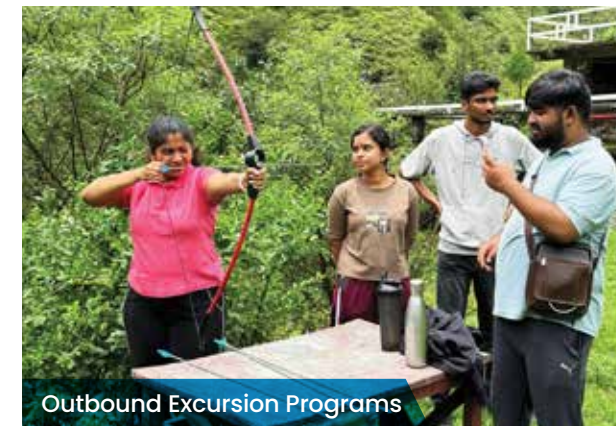
Freshers Party



Cultural Events



Global Immersion



Outbound Excursion Programs



Sports Tournaments



Domestic Immersion



Comedy Shows



Festive Celebrations



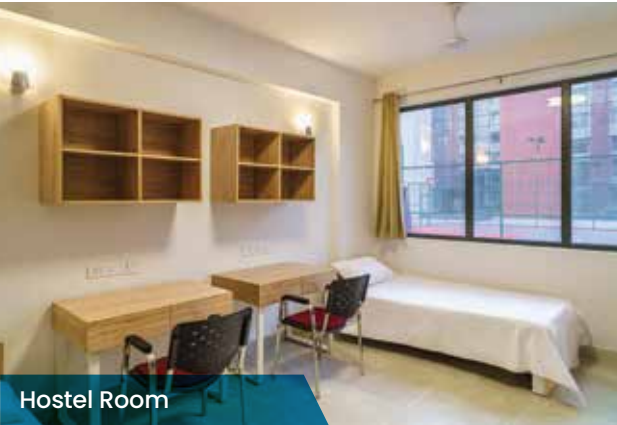
Industrial Visits

LIFE @SGBS



# INFRASTRUCTURE AND AMENITIES

- New-age Digital Campus
  - Fully Automated Learning Resource Centre
  - Theatre Style Lecture Rooms
  - Smart Classrooms
  - Computer Dome
  - Business Simulation Laboratory
  - Corporate Engagement Centre
  - Business Incubation Centre
- Start-up Garage
  - Auditoriums
  - Gymnasium
  - Conference & Meeting Rooms
  - Indoor & Outdoor Sports Facilities
  - Healthcare Centre/Cafeteria
  - Zero Carbon Footprint
  - LEED-certified Green Campus





# GETTING STARTED ON COURSE 'MISSION EVOLUTION'.

## Admission Process @ SGBS

### Our easy steps admission process involves:

1. Application Forms are available both online and offline @ Rs.1500/-
2. Review of your application by our Admissions Committee
3. Attempt our unique I-EVOLVE Metric to get assessed on key attributes
4. Personal Interview, if qualified
5. Offer of Selection
6. Submission of Holding Fees
7. Payment of 1st installment (As stipulated in the Offer Letter)
8. Commencement of session

## ADMISSIONS @ SGBS

### OUR ADMISSIONS PHILOSOPHY

SGBS is inviting learners who have a natural inclination and ability towards management and possess an entrepreneurial mindset. Through our unique and proprietary I-EVOLVE metric, we evaluate all our learners right from induction till graduation via a multistage screening process.

A program like this needs a talent willing to walk an extra mile. So, if you have compassion in heart, fire in the belly, creativity in the mind and keenness to do something more to challenge the status-quo and excel at a global stage, then you are welcome. SGBS provides you the opportunity and a congenial environment that shall transform you in to a future leader who can be a game-changer.

### ELIGIBILITY & SELECTION PROCEDURE

- Recognised Bachelor's Degree (10+2+3 or 4) in any discipline from a recognised university with at least 50% in graduation. (As per AICTE Guidelines)
- Final year graduate students can also apply.
- Candidates with work experience and/ or additional educational qualifications will get extra weightage.
- NRIs/ Foreign Citizens can seek admission based on their Academic Merit, Group Discussion, and Personal Interview. (As per AICTE guidelines)

### SELECTION PROCESS

- Class 10th, Class 12th, and Graduation Exams
- Performance in Competitive Score like CAT/XAT/CMAT/MAT/GMAT/ATMA/SNAP/NMAT
- I-Evolve - SGBS administers its proprietary and unique learning-outcome metrics to assess and evaluate learners' progress powered by attributes of responsible business leadership - entrepreneurship, values, objectivity, lateral thinking, versatility, and environmental consciousness.
- Group Exercise & Personal Interview
- Achievements in other spheres/activities highlighting leadership qualities

PGDM FULL-TIME PROGRAM FEE STRUCTURE: 2026-28

Particulars	Amount	Fee Payment Schedule			
		1st Year		2nd Year	
		Installment-1	Installment-2	Installment-3	Installment-4
Tuition Fee	₹ 10,50,000/-	₹ 2,65,000/-	₹ 2,65,000/-	₹ 2,60,000/-	₹ 2,60,000/-
Refundable Security	₹ 15,000/-	₹ 15,000/-			
Total	₹ 10,65,000/-	₹ 2,80,000/-	₹ 2,65,000/-	₹ 2,60,000/-	₹ 2,60,000/-

HOSTEL & MISCELLANEOUS CHARGE : 2026-28

Particulars	Amount	Fee Payment Schedule	
		1st Year	2nd Year
Hostel Fee	₹ 2,15,000/-	₹ 1,07,500/-	₹ 1,07,500/-
Mess fee	₹ 1,60,000/-	₹ 80,000/-	₹ 80,000/-
Total	₹ 3,75,000/-	₹ 1,87,500/-	₹ 1,87,500/-
Global Immersion (Optional)	₹ 3,50,000/-		

- Admission Retention Fee: Retention fee of Rs 50,000 will be adjusted in First Instalment of the total fee.
- Hostel Stay duration: Hostel fees are calculated for a 10-month academic period, excluding the Summer Internship (SIP) and Year Break duration.
- Refund Policy: Refund, if applicable, will be processed strictly as per AICTE refund policy.

How to Apply

Application can be submitted online at [www.Sparshgbs.in](http://www.Sparshgbs.in) using UPI/Debit card/Credit cards.

Bank Loan Support

Application can be collected directly from the institute on cash payment of Rs.1500/- or sending Demand Draft (DD) for the same amount in favour of "Sparsh Global Business School".

Fee Refund Policy

Selected students can apply for loans at attractive rates of interest from our banking and NBFC partners. The loans will be granted according to the terms and conditions of the partners.

Refund as per AICTE guidelines. For details, refer the below mentioned link  
<http://www.aicte-india.org/>

SCHOLARSHIP SEAT CRITERIA FOR PGDM SESSION: 2026-28

Scholarship Title	Criteria	Scholarship	Seats Reserved
CAT	65%ile & Above	15%	25
	75%ile & Above	25%	
	80%ile & Above	50%	
GMAT	580+	15%	
	625+	25%	
	670+	50%	
XAT	65%ile & Above	15%	
	75%ile & Above	25%	
	80%ile & Above	50%	
NMAT	175+	15%	15
	195+	25%	
	210+	50%	
CMAT/MAT	75%ile & Above	25%	15
	90%ile & Above	40%	
Girl Student	10th, 12th & Grad 70% & Above	25%	12
Girls Child	10% flat irrespective of academic Scores		

North East/UTs/J&K /Defence personals/War widows/National Sport Certified- Flat 10%

Note: To be eligible for the scholarship, candidates must have secured a minimum of 60% marks in Class 10th, 12th, and Graduation.

In addition to the NMAT score, submission of a valid scorecard from any other national-level entrance exam is mandatory as per AICTE guidelines.

\* Scholarships applicable on tuition fees